

ENGAGING THE WORLD

LEADING

the conversation on

Health Equity

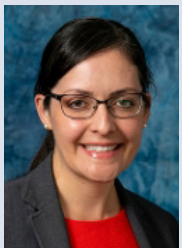
LECTURE SERIES



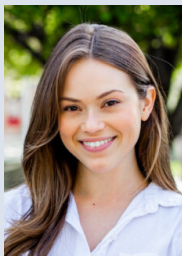
Dr. Jason Douglas - Moderator
Associate Professor, Department of Health, Society, & Behavior, Center for Environmental Health Disparities Research, UCI



Mark Lowry
Director of the OC Food Bank



Dr. Denise Payán
Assistant Professor, Health, Society, and Behavior, Public Health, UCI



Jennifer Pearce
Registered Dietician at Children's Hospital of Orange County

Promoting Equitable Food Systems – World Food Day

Monday, October 16, 2023
2:30 – 4:00 p.m.

Location: **Argyros Forum 209AB**

An expert panel will explore food equity challenges with perspectives from healthcare, medicine, academia, and food insecurity domains. A Q&A session with the audience will follow.

Co-sponsor: Department of Peace Studies

ETW events will be live streamed to the Great Room on the Rinker campus.

For more information on the Engaging the World series, scan the QR code or visit the link below



<https://www.chapman.edu/wilkinson/about/events/etw-health-equity.aspx>